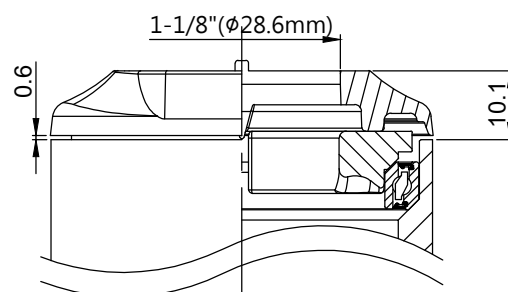


堆積高度(STACK HEIGHT)=1.8±0.5mm

NO.	零件名稱 PART NAME	材質 MATERIAL	圖號 ITEM NO.	台量 Q'TY	尺寸 DIM. DESCRIPTION
1	開孔走線斜管 COMPRESSION RING WITH HOLE	尼龍 NYLON	331-2	1	1-1/8"
2	密封式軸承 AC SEALED BEARING	軸承鋼 SUJ2	NHB-15C	2	OD52xID42xH7 x45°x45°
3	鋁下塞 CROWN RACE	鋁合金 ALLOY	324-6	1	φ39.8(φ30) <sup>+0</sup> <sub>-0.1</sub>



搭配信隆上塞，上半部堆積高度=10.1±1mm

可搭配信隆型號: TDS-(R)D631-8FOV

TDS-D632-8FOV

TDS-D634-8FOV


TDS-636-8FOV

TDS-645(SERIES)-8FOV

TDS-658-8FOV

TM-AL-20-8

- 1-1/8" 前叉立管
- 車頭管上下半部內徑/外徑52.2/56mm
- 尼龍加纖斜管
- 鋁合金下塞(內徑39.8或30mm)
- 密封式軸承
- For 1-1/8" upper steerer
- Headtube ID./OD.=52.2/56mm
- Nylon compression ring with hole
- Alloy cnc machined crown race  
(inner diameter 39.8 or 30mm)
- Oversize ac sealed bearing
- IS52.2/28.6 | IS52.2/39.8(30)

單位 UNIT	mm	比例 SCALE	1:1	日期 DRAWING DATE	2024.10.09	角法 VIEW	角法 VIEW
型號 ITEM NO.	H331						版次(REV):A
品名 ITEM NAME	H331隱藏式內走線-組立圖(Assembly drawing)						
規格 DIMENSION	1-1/8" x 52.2/56 x 39.8(30)						
圖號 FIG. NO.	H331-組立圖-A						
 誌慶工業股份有限公司							