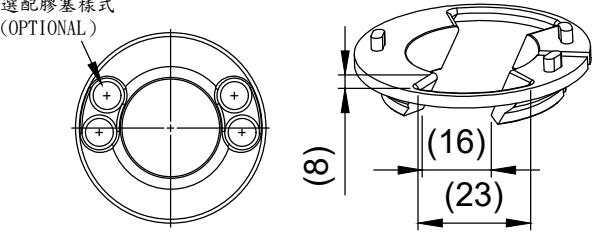


附屬零件 ACCESSORIES	塑膠薄墊片 SPACER	尼龍+纖 NYLON+FIBER	2	OD32xID29x0.55t
	用途：透過增加間隙高度使轉動更順暢 使用方式：組裝至開孔走線上塞與斜管之間 Usage : Through adding extra height to make smooth rotation How to use: Assemble in between the top cover with hole and the compression ring			

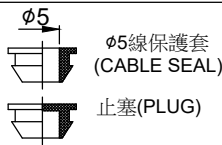
選配膠塞樣式  
(OPTIONAL)



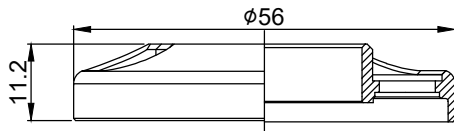
TOP VIEW FOR TOP COVER(S:1/2)

A視圖(View A)

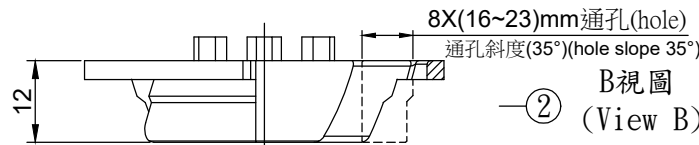
B視圖(View B)



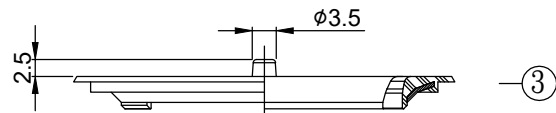
選配  
(FOR OPTIONAL)



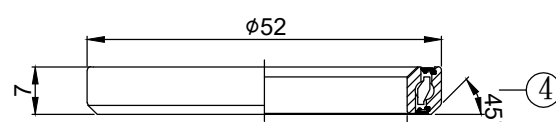
A視圖  
(View A)



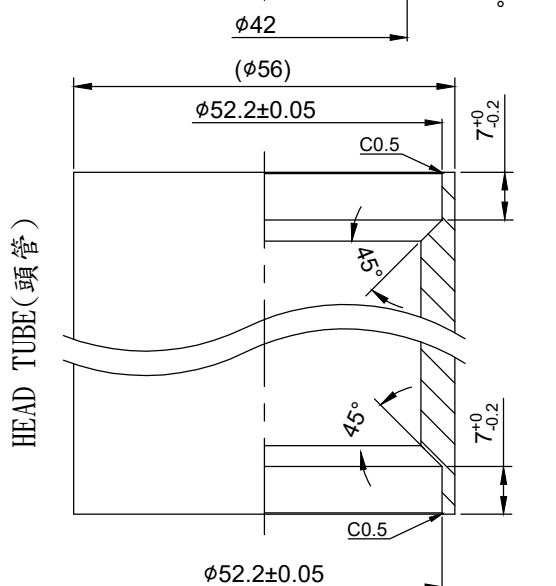
B視圖  
(View B)



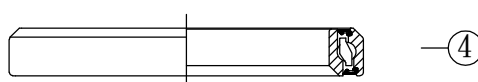
③



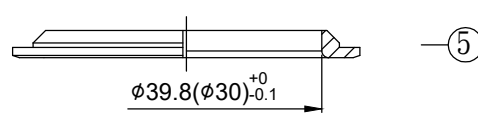
④



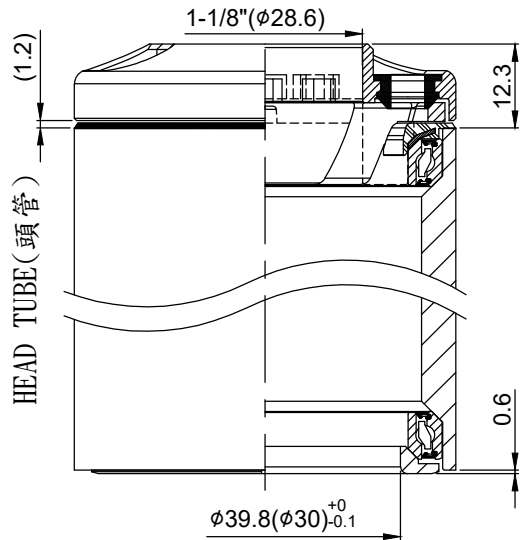
HEAD TUBE(頭管)



④



⑤



堆積高度(STACK HEIGHT)=10.1±1mm

NO.	零件名稱 PART NAME	材質 MATERIAL	圖號 ITEM NO.	台量 Q'TY	尺寸 DIM. DESCRIPTION
0-1	φ5線保護套 φ5 CABLE SEAL	橡膠 RUBBER	325-0-1	4	
0-2	止塞(無孔) PLUG	橡膠 RUBBER	325-0-2		
1	開孔走線上塞 TOP COVER WITH HOLE	鋁合金 ALLOY	322TP-3	1	1-1/8"
2	開孔走線斜管 COMPRESSION RING WITH HOLE	尼龍 NYLON	322MP-1-2	1	1-1/8"
3	防水套 WATERPROOF	碳鋼包膠 STEEL WITH RUBBER	322-1-0	1	
4	特大密封式軸承 OVERSIZE AC SEALED BEARING	軸承鋼 SUJ2	NHB-15C	2	OD52xID42xH7 x45°x45°
5	鋁下塞 CROWN RACE	鋁合金 ALLOY	324-6	1	φ39.8(φ30) <sup>+0</sup> <sub>-0.1</sub>

- For 1-1/8" upper steerer
- Headtube ID./OD.=52.2/56mm
- Alloy top cover with hole
- Alloy cnc machined crown race  
(inner diameter 39.8 or 30mm)
- Oversize ac sealed bearing
- IS52.2/28.6 | IS52.2/39.8(30)

- 1-1/8" 前叉立管
- 車頭管上下半部內徑/外徑52.2/56mm
- 鋁合金上塞
- 鋁合金下塞(內徑39.8或30mm)
- 特大密封式軸承

單位 UNIT	mm	比例 SCALE	1:1	日期 DRAWING DATE	2024.11.12	角法 VIEW	
型號 ITEM NO.	NECO 322TP-1						版次(REV):B
品名 ITEM NAME	H322TP-1 隱藏式內走線-組立圖(Assembly drawing)						
規格 DIMENSION	1-1/8" x 52.2/56 x 39.8(30)						
圖號 FIG. NO.	H322TP-1-組立圖-A						
<b>neco</b> ® 誌慶工業股份有限公司							